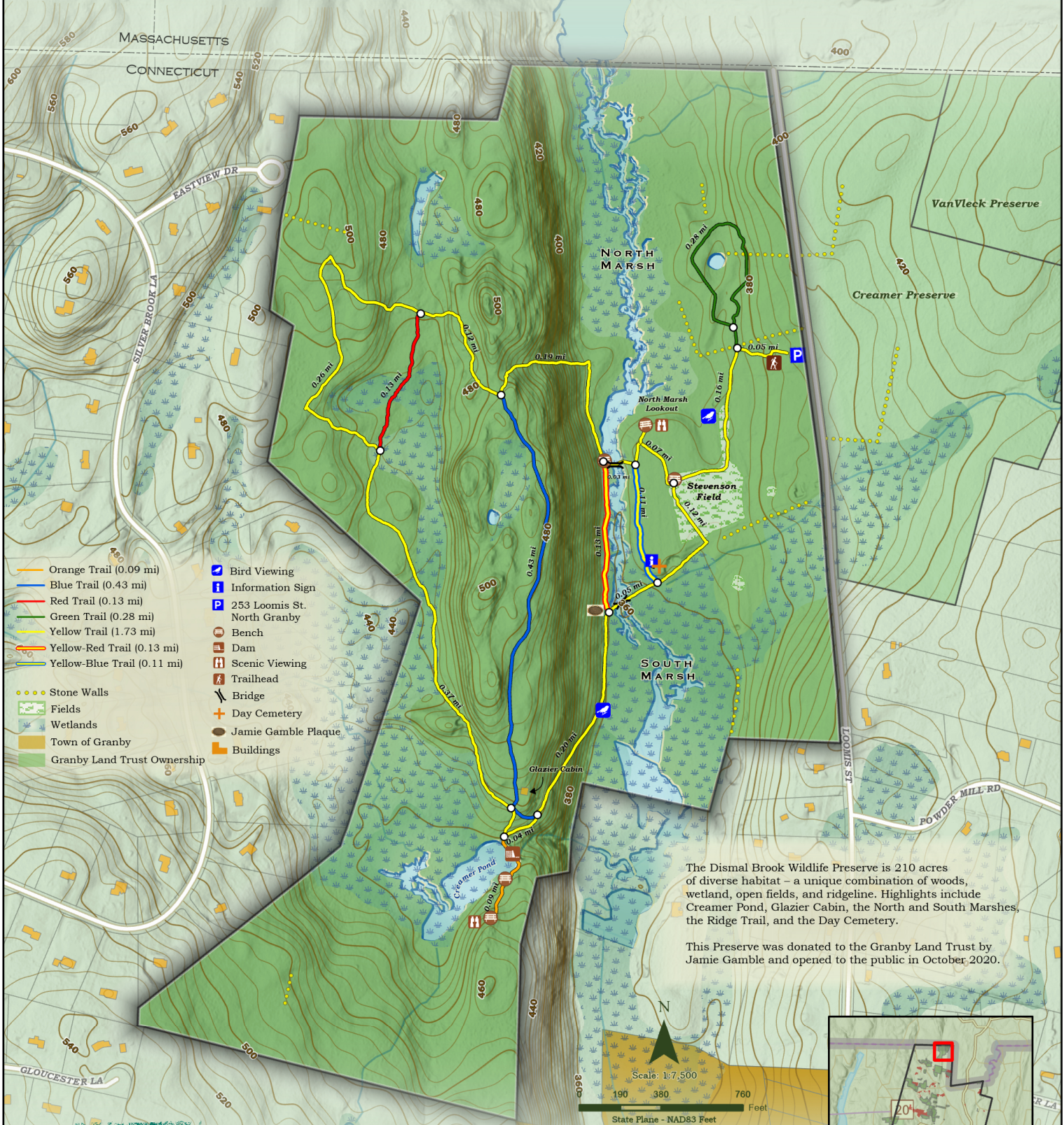


# Dismal Brook Wildlife Preserve

GRANBY LAND TRUST

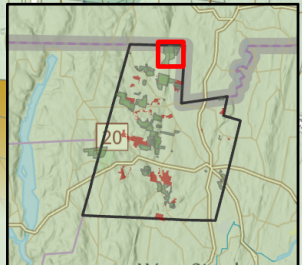
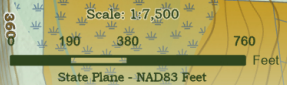


- Orange Trail (0.09 mi)
- Blue Trail (0.43 mi)
- Red Trail (0.13 mi)
- Green Trail (0.28 mi)
- Yellow Trail (1.73 mi)
- Yellow-Red Trail (0.13 mi)
- Yellow-Blue Trail (0.11 mi)
- Stone Walls
- Fields
- Wetlands
- Town of Granby
- Granby Land Trust Ownership

- Bird Viewing
- f Information Sign
- P 253 Loomis St. North Granby
- Bench
- Dam
- Scenic Viewing
- Trailhead
- Bridge
- Day Cemetery
- Jamie Gamble Plaque
- Buildings

The Dismal Brook Wildlife Preserve is 210 acres of diverse habitat – a unique combination of woods, wetland, open fields, and ridgeline. Highlights include Cremer Pond, Glazier Cabin, the North and South Marshes, the Ridge Trail, and the Day Cemetery.

This Preserve was donated to the Granby Land Trust by Jamie Gamble and opened to the public in October 2020.



**GRANBY Land Trust**  
 Preserving Granby's Natural Heritage  
[www.granbylandtrust.org](http://www.granbylandtrust.org)  
 Print Date: 2/17/2023

Source: Parcel data obtained from the Town of Granby. Planimetrics, open space data and NWI data obtained from CT ECO.

Disclaimer: This map is for illustration purposes only. The Granby Land Trust, participating local municipalities and its mapping contractors assume no legal responsibilities for the information contained herein.

Path: E:\Clients\GranbyLandTrust\GIS\ProjectFiles\GLT\_Trails\GLT\_Trails.aprx

Map Produced By: **SPERRY GEOSPATIAL, LLC**  
 Mapping the Adventure in Your Smartphone

Airbus, USGS, NGA, NASA, CGIAR, NCEAS, NLS, OS, NMA, Geodatastyrelsen, GSA, GSI and the GIS User Community, Esri, HERE, Garmin, SafeGraph, FAO, METI/NASA, USGS, EPA, NPS