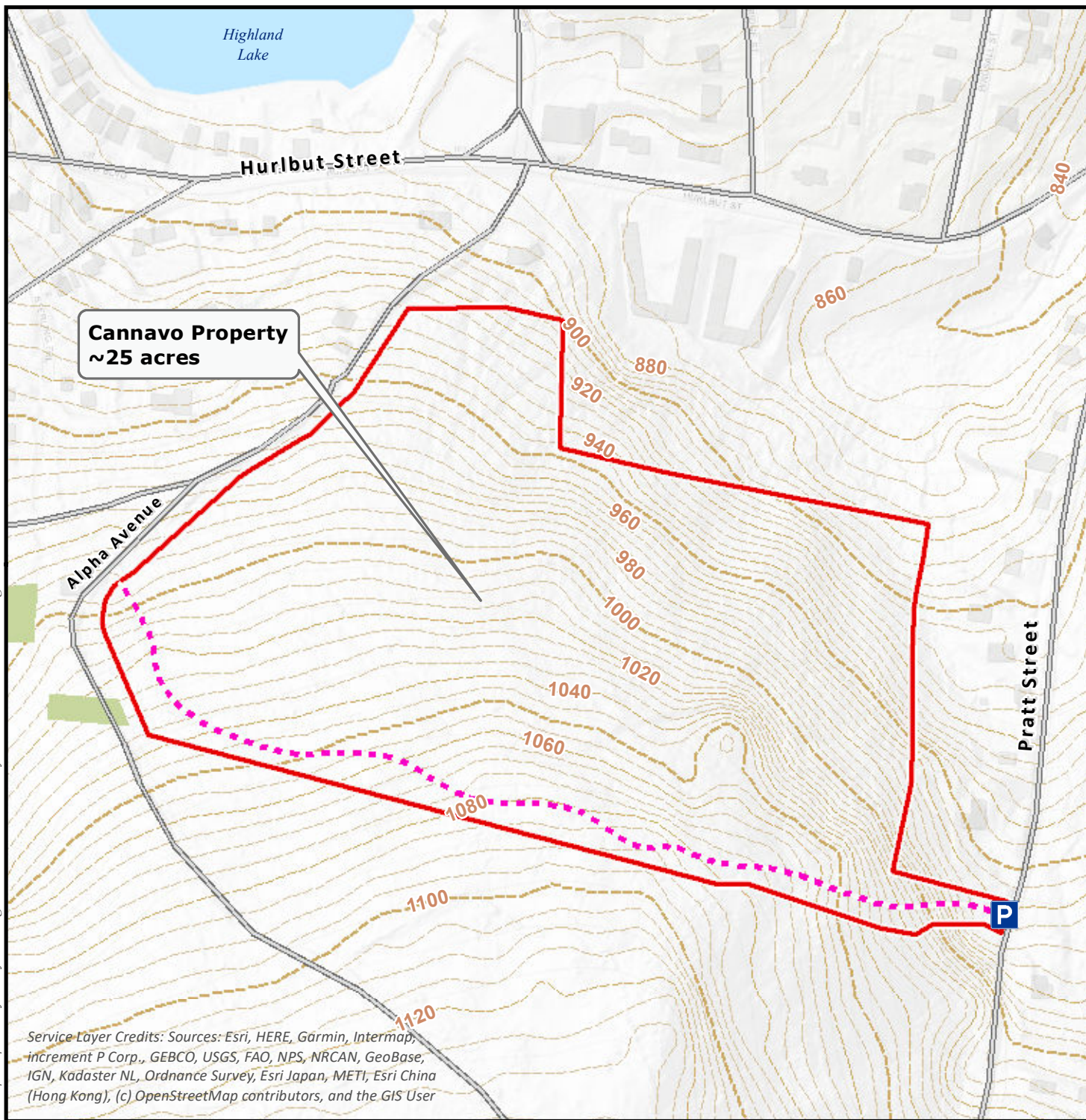


# Cannavo Property Proposed Access



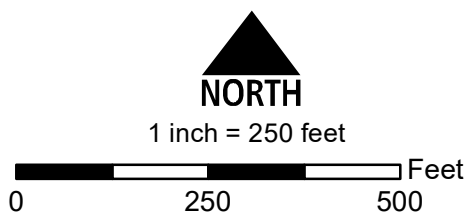
Map Prepared by: Stacy Deming, GISP Housatonic Valley Association Cornwall Bridge, Connecticut

Service Layer Credits: Sources: Esri, HERE, Garmin, Intermap, increment P Corp., GEBCO, USGS, FAO, NPS, NRCAN, GeoBase, IGN, Kadaster NL, Ordnance Survey, Esri Japan, METI, Esri China (Hong Kong), (c) OpenStreetMap contributors, and the GIS User

Date: 9/22/2022

## Map Elements

- |  |                  |  |                  |
|--|------------------|--|------------------|
|  | Proposed Parking |  | Cannavo Property |
|  | Roads            |  | 5 FT Contours    |
|  | Protected Land   |  | 20 ft            |
|  | Proposed Trail   |  | 10 ft            |
|  | Cannavo Property |  | 5 ft             |



Data Sources:  
 Parcels: Winchester Assessor(2020)  
 Proposed Parking & Trail: Winchester Land Trust  
 Imagery: CT DEEP (2019)