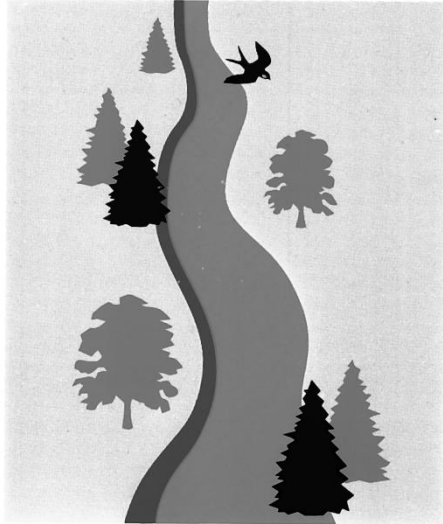


WILLIMANTIC RIVER GREENWAY CONNECTICUT



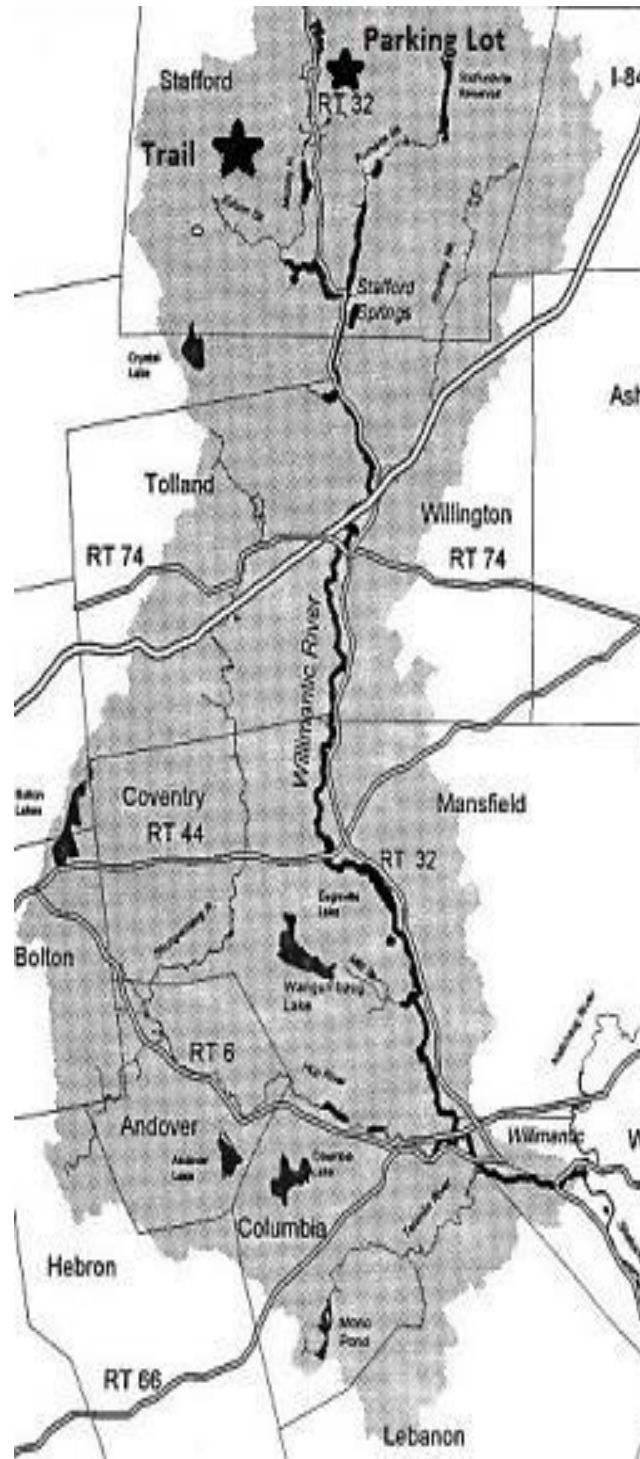
GREENWAYS

Willimantic River Greenway is a regional project to create connection along the 25-mile length of the river from Stafford to Willimantic. Recreational opportunities are developed by the towns of Columbia, Coventry, Ellington, Lebanon, Mansfield, Stafford, Tolland, Willington and Windham.

Stafford is the start of the 25 mile greenway. The Municipal Parking Lot on Route 32 is great for launching canoes and kayaks

The **Woodlawn Trail** is a recreational opportunity for hikers.

See map on back of brochure for trail location and parking lot.



WOODLAWN TRAIL



Trail maintained by



Please help us conserve resources and return this map to the trail map box.

Also featured Municipal Parking Lot on Route 32

Woodlawn Trail

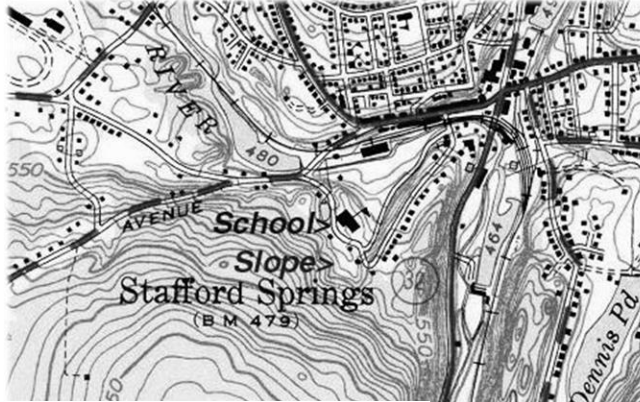
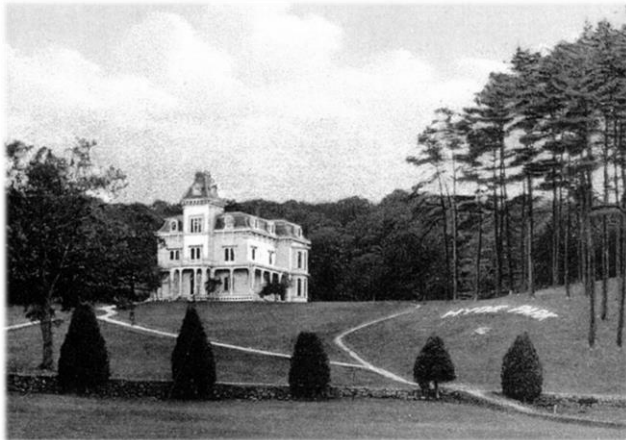
The Stafford Conservation Commission is pleased to maintain the Woodlawn Trail for the residents of Stafford. The trail is named in the memory of Julius Converse who owned the large farm and hayfield. The hayfield was later transformed into the great lawn for the Converse mansion Woodlawn. Today, it is known as Hyde Park.



Julius Converse

The trail head is behind the Witt School (old high school) and except for a steep initial incline, the trail is a 2 mile easy walk which brings the hiker to private spring fed wells, massive stone walls, lovely vistas of the river valley and a large vernal pool.

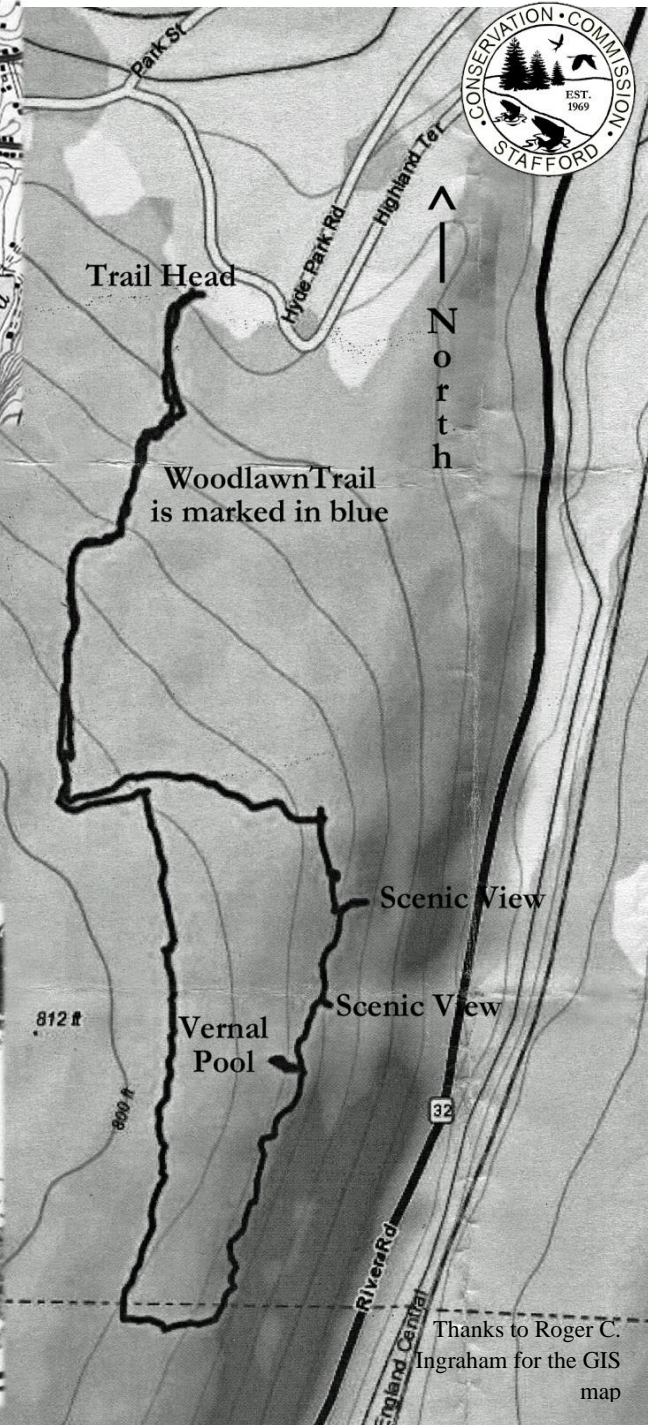
Shown below are Highland Terrace and Woodlawn



Directions: From the south, follow Rt. 32 (River Road) as it crosses the railroad tracks and exit rotary around Holt Fountain onto Main Street (Rt. 190) going west (third exit after entering rotary). In 500 feet, turn left onto Spring Street and cross bridge. After Stafford Historical Society and church on right, make right onto Highland Terrace. After the road bears to right and old school is on right, enter parking lot to left. Trail head for Woodlawn Trail is at back of parking lot.



Did you know? In the early fifties, the Stafford Ski Club maintained a rope tow on the steep incline at the end of Highland Terrace. Shown above is the Stafford Ski club in 1956.



Thanks to Roger C. Ingraham for the GIS map