

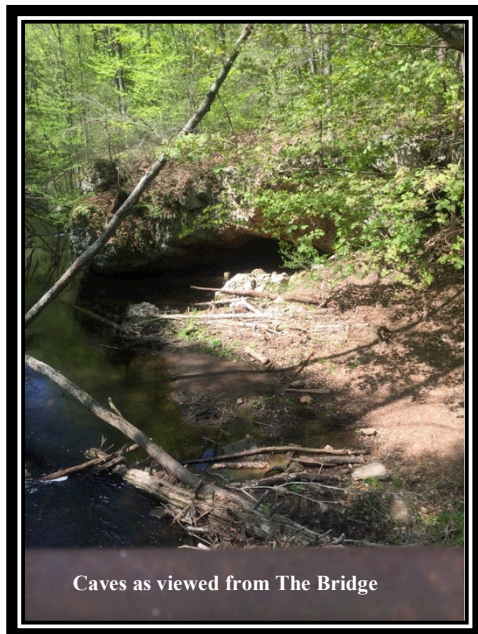


Shortly after turning south on the Yellow Trail from the Red Trail you will see a dark area on the trail. This is related to 19<sup>th</sup> century charcoal production. Charcoal is produced from the burning of wood in the absence of oxygen. Wood would be stacked and then covered with dirt or turf and set afire. Charcoal was important because it burned at temperatures up to nearly 4000 degrees F.

Bridge on the Red Trail over the Branford River.

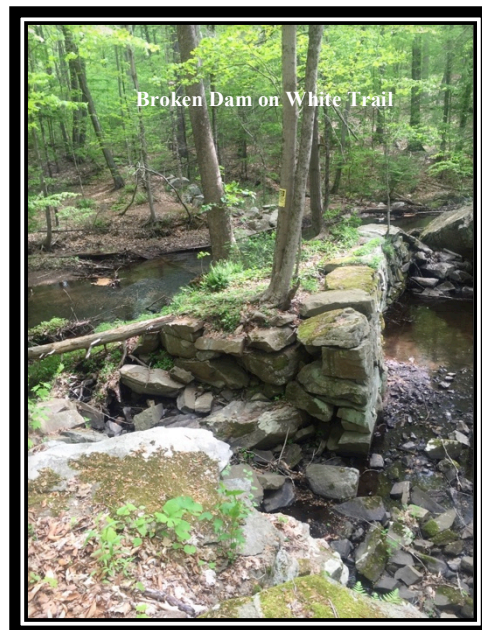


Bridge over the Branford River



Caves as viewed from The Bridge

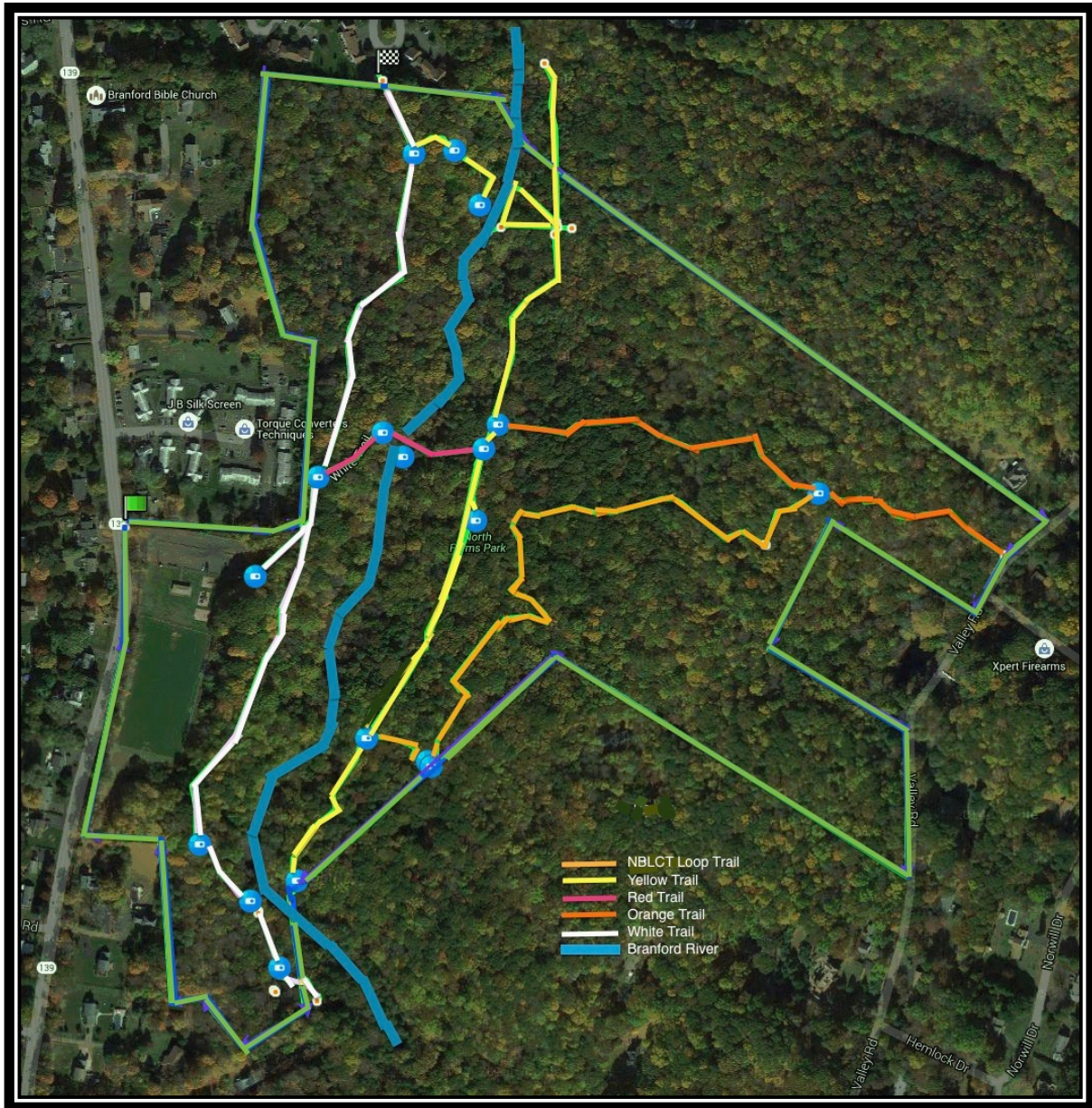
View of “Caves” from the Bridge



Broken Dam on White Trail

There is a broken dam at the southern end of the Yellow and White Trails. Over the years the dam was used to power a lumber mill, cider mill, grist mill, grind corn and produce axe handles. The dam had been in existence as early as 1761 and possibly before that. The millrace, which directed water to the wheel that then generated power, can still be clearly seen from the southern end of the White Trail. In fact, if you look carefully, there is an axel with a large gear located on the west side of the river. This was undoubtedly used in the mill at one time.

# North Farms Park Trails – Owned by The Town of North Branford



Directions: The Park is located on Route 139 approximately 1 mile south of North Branford Center.

Open to the public during daylight hours for passive recreation. **No motorized vehicles please.**

Follow us on Facebook:

NBLCT Website: [www.nblandtrust.org](http://www.nblandtrust.org)

