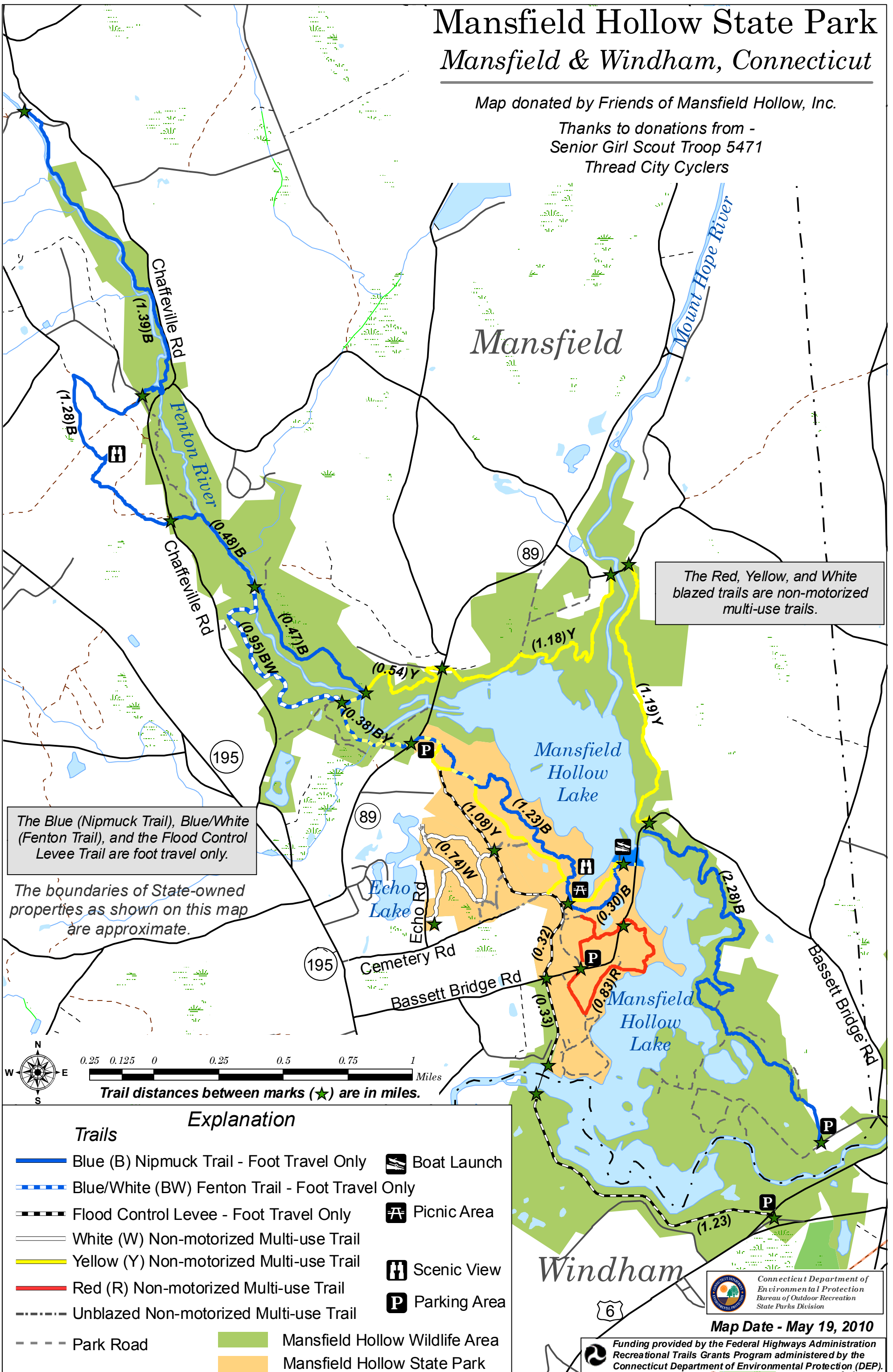


Mansfield Hollow State Park

Mansfield & Windham, Connecticut

Map donated by Friends of Mansfield Hollow, Inc.

Thanks to donations from -
Senior Girl Scout Troop 5471
Thread City Cyclers



The Red, Yellow, and White blazed trails are non-motorized multi-use trails.

The Blue (Nipmuck Trail), Blue/White (Fenton Trail), and the Flood Control Levee Trail are foot travel only.

The boundaries of State-owned properties as shown on this map are approximate.

Trail distances between marks (★) are in miles.

Trails		Explanation	
	Blue (B) Nipmuck Trail - Foot Travel Only		Boat Launch
	Blue/White (BW) Fenton Trail - Foot Travel Only		Picnic Area
	Flood Control Levee - Foot Travel Only		Scenic View
	White (W) Non-motorized Multi-use Trail		Parking Area
	Yellow (Y) Non-motorized Multi-use Trail		
	Red (R) Non-motorized Multi-use Trail		
	Unblazed Non-motorized Multi-use Trail		
	Park Road		Mansfield Hollow Wildlife Area
			Mansfield Hollow State Park

Connecticut Department of Environmental Protection
Bureau of Outdoor Recreation
State Parks Division

Map Date - May 19, 2010

Funding provided by the Federal Highways Administration
Recreational Trails Grants Program administered by the
Connecticut Department of Environmental Protection (DEP).